

POWERSCAN™ 9600 AUTO RANGE

Industrial Handheld Auto Range Scanner with extra-long range capabilities and high flexibility



ULTRA-RUGGED WITH NEW BALANCED ERGONOMICS!

The PowerScan 9600 Auto Range (AR) barcode series is designed to withstand the toughest environmental conditions of a warehouse. The PowerScan 9600 imagers have an ultra rugged center of gravity design with balanced weight to avoid any stress during daily activities. A very visible aiming system allows the precise aiming on the barcode, including codes that are either close or far away.

AUTO RANGE OPTIC TO FULFILL ANY CUSTOMER NEED

The PowerScan 9600 AR series is a top performer even on damaged barcodes or when aiming through shrink wrap, and is equipped with a very fast 1D/2D autofocus scan engine that allows the operator to move easily from a short distance of a few centimeters of a pick list up to more than 20 m / 65 ft to aim at the highest barcode of a warehouse rack, even in very challenging scanning conditions.

MOBILITY ENHANCES PRODUCTIVITY

The PowerScan 9600 AR cordless imagers further enhance operator efficiency and safety with a double option of radios: Datalogic's proprietary STAR Cordless System™ or the new Bluetooth® 5.0 variant. Accurate power management allows long lasting battery life to always guarantee more than one shift of intensive scanning.

The PowerScan 9600 family features Datalogic's Wireless Charging System. Based on inductive-charging technology, the Wireless Charging System eliminates interaction with battery contacts and pins which often get dirty, bent, or broken over time. This removes a key point of failure for devices used in industrial and retail functions.

The BC9600 base/charger has a modular design and is available with multiple interface plug-ins for standard and industrial communications such as RS-232, USB, Standard Ethernet and Industrial Ethernet protocols.

FEATURES

- Available in corded, cordless Bluetooth, and cordless STAR with display option models
- Auto Range Optics from contact to 20+ m / 65+ ft
- Water and Particulate Sealing Rating: IP67 and IP65; Cradle IP65; 10 million hits on the trigger
- Center of gravity design
- Modular cradle design allowing interface expansion
- High visibility OLED Display with 16-Key keypad options
- Highly precise aiming system visible even in daylight conditions
- Vibration and loud beeper for good-read feedback
- Wireless Charging reducing total cost of ownership (TCO)
- EASEOFCARE Service Plans offer a wide range of service options to protect your investment, ensuring maximum productivity and ROI.

INDUSTRIES - APPLICATIONS

- **Warehouse and Logistic Centers:**
 - Shipping / Receiving
 - Inbound / Outbound
 - Parcel Preparation
 - Order Fulfillment
 - Picking / Put Away
- **Manufacturing Shop Floor:**
 - Intralogistics
 - Work In Progress (WIP)
 - Traceability
 - Inventory
 - Material handling



POWERSCAN 9600 AUTO RANGE

TECHNICAL SPECIFICATIONS

CORDLESS COMMUNICATIONS

Datalogic STAR Cordless System™	Radio Frequency: 433 MHz; Effective Radiated Power: < 10 mW; Point-to-Point / Multi-Point Configuration; Max. Readers per Radio Receiver: 16; Two Way Communications. Radio Range (Open Air): 150 m / 492 ft low speed; 100 m / 328 ft high speed
Bluetooth Wireless Technology	Radio Frequency: 2.4 GHz. Profiles: SPP (Serial Port Profile) and HID (Human Interface Device); Protocol: Bluetooth 5.0 Certified. Class 1, Class 2 and Class 3; Radio Range from the base station (Open Air): 100.0 m / 328.0 ft Security: Data Encryption; Scanner Authentication

DECODING CAPABILITY

1D / Linear Codes	Auto discriminates all standard 1D codes including GS1 DataBar™ linear codes.
2D Codes	Aztec Code; China Han Xin Code; Data Matrix; MaxiCode; Micro QR Code; QR Code; Dot Code
Postal Codes	Australian Post; China Post; IMB; Japanese Post; KIX Post; Planet Code; Portuguese Post; Postnet; Royal Mail Code (RM4SCC); Swedish Post
Stacked Codes	EAN/JAN Composites; GS1 DataBar Composites; GS1 DataBar Expanded Stacked; GS1 DataBar Stacked; GS1 DataBar Stacked Omnidirectional; MacroPDF; MicroPDF417; PDF417; UPC A/E Composites

ELECTRICAL

Current	PD9630-AR: Operating (max) 770 mA @ 5V (550 mA in compatibility mode); 310 mA @ 12V. Standby / idle (max): 140mA @ 5V; 80 mA @ 12V PM/PBT9600-AR: Operating 480 mA @ 3.7 V.; Charging (Typical) < 15 W; Cradle only: 150 mA @ 5 V (Operative)
Battery	Lithium-Ion: 3350 mAh Charge Time @ 12 VDC: 2.5 hours to charge up to 95%, 3.2 hours to charge 100%, External Power. Reads per Charge: 80,000+
Input Voltage	Corded models: 5 - 30 VDC ± 5% Cordless models: Host powered: 5V DC ± 5% or 10 - 30 VDC External power supply: 10 - 30 VDC ± 5%

ENVIRONMENTAL

Ambient Light	0 - 100,000 lux
Drop Resistance	Withstands 50 drops from 2.5 m / 8.2 ft @ 20 °C / 68 °F; Withstands 50 drops from 2.0 m / 6.6 ft @ -20 °C / -4 °
Trigger Resistance	Withstands 10 million hits
ESD Protection (Air Discharge)	20 kV
Humidity (Non-Condensing)	0 - 95%
Particulate and Water Sealing	IP67 and IP65; Cradle IP65 (specific models)
Temperature	Operating: Corded: -30 to 50 °C / -22 to 122 °F; Cordless: -20 to 50 °C / -4 to 122 °F Storage/Transport: -40 to 70 °C / -40 to 158 °F Charging: 0 to 40°C / 32 °F to 104 °F, ideal up to 35° C / 95°F

INTERFACES

Interfaces	RS-232 / USB / Ethernet and Industrial Protocols
-------------------	--

PHYSICAL CHARACTERISTICS

Colors Available	Yellow/Black
Dimensions H x L x W	19.8 x 14.0 x 7.9 cm / 7.8 x 5.5 x 3.1 in
Display	PM9600-DKAR. 1.8" OLED graphic display; Font Dimensions: User selectable
Keypad	PM9600-DK: 16 Keys. Configurable
Weight	PD9630-AR: 320g / 11.2 oz PBT9600-AR / PM9600-AR: 445 g / 15.7 oz PM9600-DKAR: 480 g / 16.9 oz

READING PERFORMANCE

Imager Sensor	1280 x 800 pixels
Light Source	Aiming: 650 nm VLD Illumination: Red LED reading light
Print Contrast Ratio (Minimum)	20%
Reading Angle	Pitch: +/- 60°; Roll (Tilt): 360°; Skew (Yaw): +/- 60°
Reading Indicators	Beeper (Adjustable Tone and Volume); Dual Good Read LEDs; Vibration.
Resolution (Maximum)	1D Codes: 2.5 mil; 2D Codes: 5 mil

READING RANGES

Typical Depth of Field	Minimum distance determined by symbol length and scan angle. Printing resolution, contrast, and ambient light dependent.
-------------------------------	--

Code 39 3 mils: up to 95 cm / 37 in
Code 39 20 mils: up to 600 cm / 236 in
EAN/UPC 13mils: up to 320 cm / 126 in
Code 128 40 mils: up to 1000 cm / 393 in
Code 128: 100 mils: up to 2000 cm / 787 in
Data Matrix 10 mils: up to 110 cm / 43 in
Data Matrix 55 mils: up to 650 cm / 256 in
Data Matrix 100 mils: up to 1000 cm / 393 in

SAFETY & REGULATORY

Agency Approvals	The product meets necessary safety and regulatory approvals for its intended use. The Quick Reference Guide for this product can be referred to for a complete list of certifications.
Environmental Compliance	Complies to China RoHS; Complies to EU RoHS; Complies to R.E.A.C.H.
Laser Classification	Caution Laser Radiation - Do not stare into beam; CDRH Class II; IEC 60825 Class 2
LED Classification	IEC 62471 Class 1 LED

UTILITIES

Datalogic Aladdin™	Datalogic Aladdin configuration program is available for download at no charge.
OPOS / JavaPOS	OPOS and JavaPOS Utilities are available for download at no charge.

WARRANTY

Warranty	3-Year Factory Warranty
-----------------	-------------------------

ACCESSORIES

Base Stations / Chargers



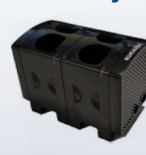
BC9630 Base station/charger Multi-Interface, removable battery
BC9631 Base station/charger Multi-Interface, IP65

Battery



RBP-PM96 Removable battery

Multi-Battery Charger



MC-P096-M2 Multi Battery Charger 2 slots
MC-P096-M4 Multi Battery Charger 4 slots

Forklift Mounting Kit



VMK-P096 Vehicle Mounting Kit